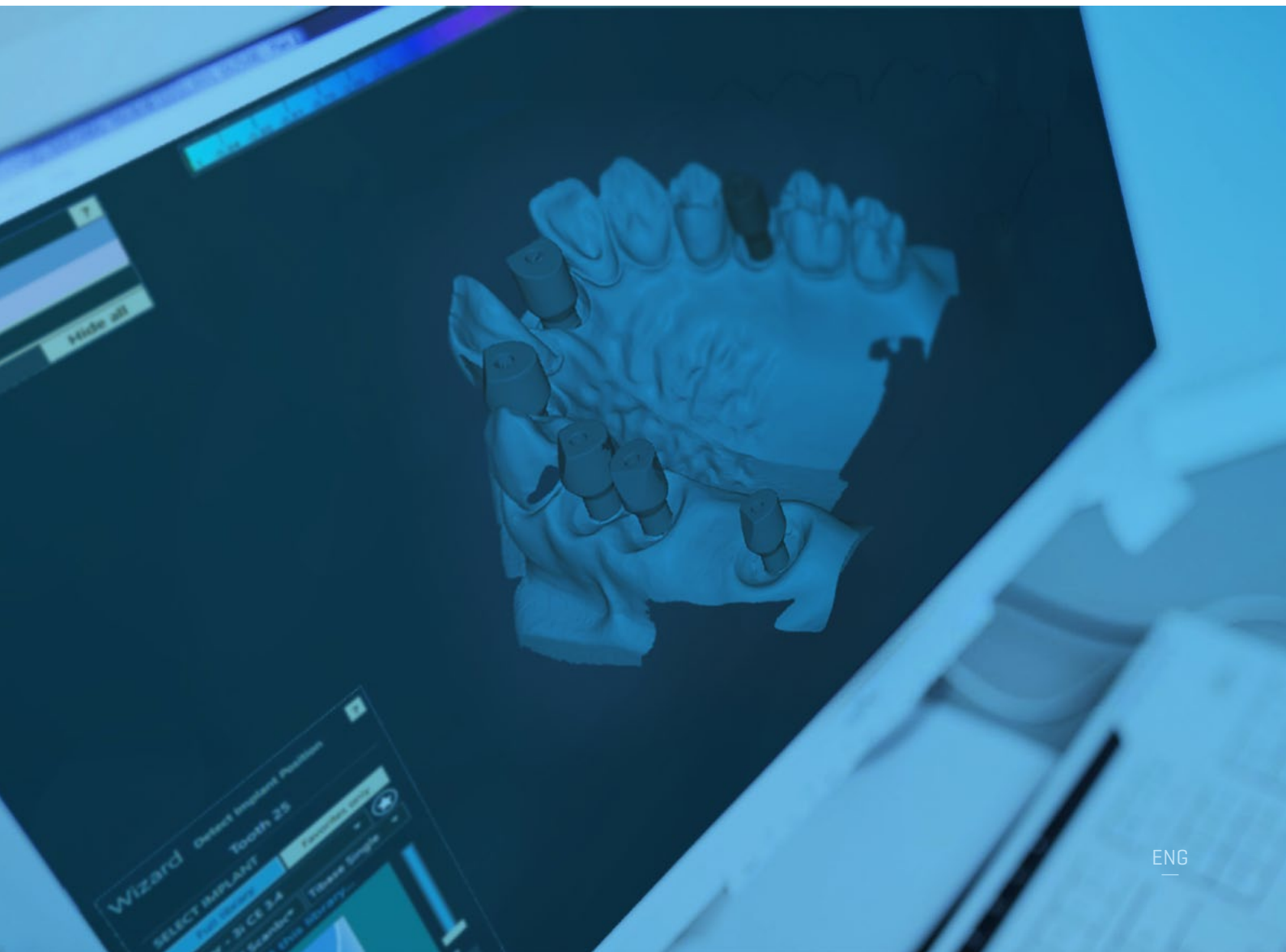


# CAD/CAM

Digital **solutions**



# CAD / CAM

Digital Flow has become the standard in dental implantology. Reiner dental supports its customers with following services within CAD/CAM process.

- High standard Intraoral Scanners.
- 3D printing of models, surgical splints, guides and biomodels.
- Abutments for digital flow supported by own libraries and tested by most popular softwares: Exocad®; 3Shape®; Dental Wings®; hyperdent® and WorkNC®.
- Zirconia and PMMA Discs for milling.
- Pre-mill blanks for milling or personalized milling pieces.

## Index

- 4** Laboratory Scanbody
- 5** Intraoral Scanbody
- 6** Digital Replica
- 7** Straight Ti bases
- 8** Angled solutions
- 9** 30° Screw
- 12** 3D Printing
- 13** Zirconia discs
- 14** Pre-mill blanks and personalized abutments

## Laboratory Scanbody

# PERFECT CONNECTION FITTING

Peek scanbodies for optimized scanning. Built on Ti Base to maintain a perfect fitting with the implant.

Peek marker which reduces reflection, without spray requirement.

Marker anchored to the Ti Base to avoid micromovements and deviations.

Titanium base to improve both durability and fitting.

100% parallelism between flat sides to avoid accumulated rotation.



## Intraoral Scanbody

# ANATOMIC DESIGN FOR REDUCED INTERDENTAL GAP OR NARROW PLATFORMS

Special design applied to small spaces and narrow platforms. With only 4,5mm diameter and 12mm high which ensures a perfect scanning even in deep sub-crestal implants location.

Each piece is checked after manufacturing to ensure 100% dimensions minimizing scanning errors.

Reduced screw hole diameter to increase the scanning surface.

Surface treatment to give a matte finish to avoid reflections and allowing intraoral and laboratory scanning without any spray need.

Standard implant screw, so no need for different screw and screwdriver.



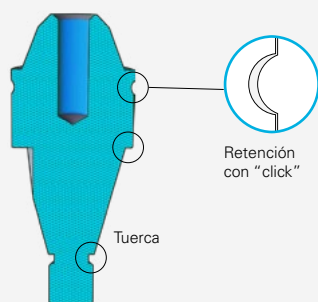
## Digital Replica

# Quick DIGITAL

Easy location and fixation replica which ensures a precise work in the laboratory. No need for any specific tool for correct fixation into the model. The click system will easily indicate the correct positioning.

The two flat sides of the analogue help preventing any turn or rotation, ensuring a correct anchoring.

1,2mm universal nut connection which makes unnecessary to have special tooling.



### Z Axis Fixation

Apart from nut fixation, which prevents it from being removed or movement on the Z axis, our digital analogues have two other positioners to prevent this movement.

### Easy Insertion

Its conical shape makes it easier to insert into the model.

## Straight Ti Bases

# UNIQUE STRENGTH & PRECISION

Titanium nitride coated Ti Base, increasing superficial hardness to 2.300Vickers and reducing bacterial activity. Manufacturing tolerances below 10 microns.



Different gingival heights available and included in the library.

Maximum thickness and chimney height for increased resistance and stability.

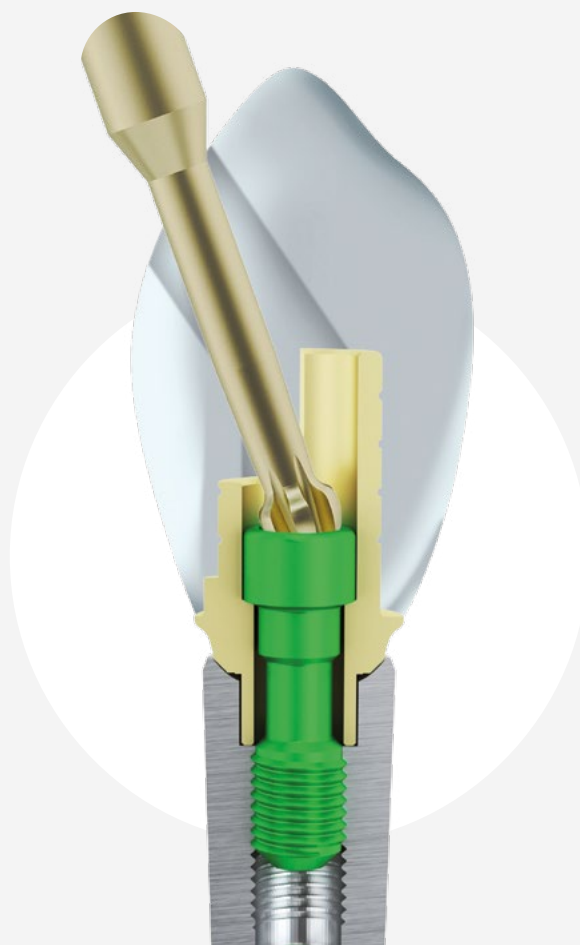
Maximum support for Zirconia, respecting natural anatomy.

Designed to be used with original screws.

## Angled Solutions

# ADJUSTABLE HEIGHT AND ANGULATION

The Reiner angled solution allows up to 30° of angulation, maintaining the implant manufacturer recommended torque.



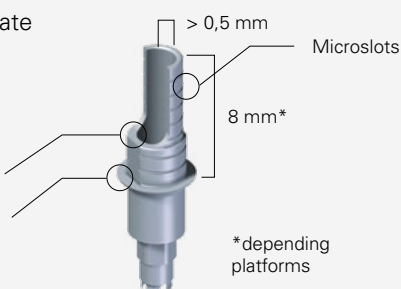
Reiner Angle Ti Bases have a 8mm thickness (taller than the concurrence) which allows to adjust the required high of each case in the lab cutting by the provided horizontal micro-slots. This feature increases the cement surface.

Adjusting the Ti Base by those slots, the angulation can vary up to 30° depending on the case. The cement carry over to the occlusal channel is minimized with this design.

Lateral recess to facilitate entry of the screw and screwdriver.

Cut off for greater angulation

Zirconia support area



### Other features

0,5mm space for Zirconia support and adapted to natural emergency profile.

>0,5mm chimney thickness for greater consistency and to prevent breakage.

Titanium nitride coating for an aesthetic finish and bacterial activity reduction.



## 30° Screw

# MAXIMIZED ANGULATION

Hexalobular Screw that able to apply recommended torque even on 30° cases. Screw Settlement as per original implant manufacturer.

Screw head with hexalobular connection patented EP 2420354 B1.

## Patented SYSTEM

Green anodizing for better identification in clinic as well as in laboratory.

Screw settlement respecting the geometries of original implant.

### Screwdriver

The screwdriver for the 30° screw has a titanium nitride coating to avoid premature wearing. As well for easy identification.



IMPLANT SYSTEM	Ø	Quick DIGITAL	SCANBODY			TI BASE		BASE TITANE		30° SCREW
			Intraoral	Intraoral R	Laboratory	Non Engaging	Engaging	Non Engaging	Engaging	
Hexágono Externo (Branemark)	NP	PD-076D	PD-310D		PD-310	PD-270	PD-271	PD-270D	PD-271D	PD-075D
						PD-085	PD-086	PD-085D		
	RP	PD-006D	PD-311D	PD-311R	PD-311		PD-086/A8	PD-085D/0,5	PD-086D	PD-005D
						PD-085/2	PD-086/2	PD-085D/2		
	WP	PD-121D	PD-312D		PD-312	PD-085/3	PD-086/3	PD-085D/3		
						PD-272	PD-273	PD-272D	PD-273D	PD-119D
Hexágono Interno						PD-485	PD-486			
	NP	PD-038D	PD-810D	PD-810R	PD-810	PD-485/1,5	PD-486/1,5	PD-485D	PD-486D	PD-037D
						PD-485/2	PD-486/2			
						PD-485/3	PD-486/3			
	RP	PD-072D	PD-313D	PD-313R	PD-313	PD-130	PD-131			
							PD-131/A8	PD-130D	PD-131D	PD-037D
						PD-130/2	PD-131/2			
	WP	PD-125D					PD-131/2/A8			
						PD-029	PD-030	PD-029D	PD-030D	PD-037D
Straumann Bone Level	NP	PD-424D	PD-439D	PD-439R	PD-439	PD-427	PD-428 PD-428L	PD-427D	PD-428D	PD-423D
						PD-215	PD-216*			
							PD-216/2			
	RP	PD-158D	PD-322D	PD-322R	PD-322	PD-215/3	PD-216/3	PD-215D	PD-216D	PD-157D
							PD-216L			
Straumann Tissue Level	RP	PD-015D	PD-320D		PD-320	PD-338	PD-339 PD-339/A8	PD-338D	PD-339D	PD-154D
	WN	PD-031D	PD-334D		PD-334D	PD-333	PD-332	PD-333D	PD-332D	PD-154D
3i Certain						PD-212	PD-213	PD-212D	PD-213D	
	NP	PD-103D	PD-325D	PD-325R	PD-325			PD-212DA2	PD-213DA2	PD-107D
								PD-212DA3	PD-213DA3	
								PD-212DA4	PD-213DA4	
						PD-112	PD-113	PD-112D	PD-113D	
	RP	PD-108D	PD-326D	PD-326R	PD-326			PD-112DA2	PD-113DA2	PD-107D
								PD-112DA3	PD-113DA3	
								PD-112DA4	PD-113DA4	
	WP	PD-111D	PD-327D		PD-327	PD-196	PD-197	PD-196D	PD-197D	PD-107D
Nobel Active						PD-301	PD-302			
	NP	PD-194D	PD-318D	PD-318R	PD-318	PD-301/1,5	PD-302/1,5	PD-301D	PD-302D	PD-193D
						PD-301/3	PD-302/3			
						PD-134	PD-135			
	RP	PD-129D	PD-319D	PD-319R	PD-319	PD-134/1,5		PD-134D	PD-135D	PD-128D
						PD-134/3	PD-135/3			
Astra-Tech TX						PD-138	PD-139			
	RP	PD-045D	PD-323D	PD-323R	PD-323	PD-138/1,5	PD-139/1,5	PD-138D	PD-139D	PD-043D
						PD-138/3	PD-139/3			
	WP	PD-098D	PD-324D		PD-324	PD-217	PD-214	PD-217D	PD-214D	PD-097
Nobel Replace	NP	PD-057D	PD-315D		PD-315	PD-275	PD-276	PD-275D	PD-276D	PD-058D
	RP	PD-054D	PD-316D		PD-316	PD-132	PD-133	PD-132D	PD-133D	PD-053D
	WP	PD-067D	PD-317D		PD-317	PD-277	PD-278	PD-277D	PD-278D	PD-053D
Megagen Anyridge	RP	PD-885D				PD-896	PD-897	PD-896D	PD-897D	PD-887D
Multiunit	RP	PD-023D	PD-329D	PD-329R	PD-329	PD-203		PD-203D		PD-022D
BTI Interna	RP		PD-328D	PD-328R	PD-328	PD-305	PD-306			
	WP				PD-393	PD-391	PD-392			
BTI Externa	NP				PD-383	PD-381	PD-382			
	WP				PD-827	PD-732	PD-733			
						PD-732B	PD-733B			
Klockner	RP		PD-453D	PD-435R	PD-453	PD-452	PD-454			
Biomet 3i	NP		PD-801D	PD-801R	PD-801	PD-490	PD-491			
Sweden Martina	NP					PD-848				
	NP		PD-822D		PD-822	PD-821	PD-822			
	WP					PD-823	PD-824			
Bihorizons	NP		PD-938D		PD-938	PD-856	PD-857			

# PERSONALIZED IMPLANTOLOGY SOLUTIONS

## 3D Printing

# INDIVIDUAL TREATMENT

3D printing represents an improvement in the customer experience. It saves time and reduces patient visits to the clinic. It manages to shorten timelines in the prosthetic and clinic process and improve treatment planning. Reiner Prints models, guides and surgical splints.

### Specific Materials

The 3D printing is executed in materials specifically designed for dentistry, such as ZABS grey for DLP technology or VeroDentPlus TM (MED690) for Polijet printing technology. We also print in transparent and white colour bio-compatible materials.



**Reception of orders  
until 4 p.m.**



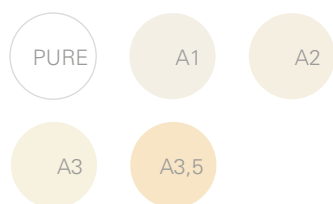
**Order delivery  
in 48/72 hours**

Contact us at  
**[cadcam@reinerdental.com](mailto:cadcam@reinerdental.com)**  
or through your zone delegate.

High, Medium and  
Low translucency

# ZIRCONIA DISCS

Sample colours are  
approximate.



The Zirconia discs have become a key part in milled restorations based on Zr. In Reiner we have the support of Kyocera with more than 20 years of experience. Starting from the best raw materials specially selected and applying state of the art industrial processes in its German factory the discs represents the excellence in this field.



10 year WARRANTY



Type	Colour				Translucency			Thickness								Resistance	Reference*				
	A1	A2	A3	A3,5	LT	MT	HT	10	12	14	16	18	20	25	Mpa	Tipo	Color	Tran.	Ø	Es.	
Z-Al Med White					35%			●	●	●	●	●	●	●	1200	ZHC W	LT	98		●	
Z-Al Med Color	●	●	●	●	35%					●				●	1200	ZHC A ●	LT	98		●	
Z-Nature White					41%				●	●		●	●		1000	ZHC W	MT	98		●	
Z-Nature Color	●	●	●	●	41%					●		●			1000	ZHC A ●	MT	98		●	
Z-Nature Multilayer Color		●	●		41%							●			1000	ZHC A ●	MT	98		●	
Z-Nature Ultra White					45%				●	●		●	●		1000	ZHC W	MT	98		●	
Z-Nature Ultra Color	●	●	●	●	45%					●		●			1000	ZHC A ●	MT	98		●	
Z-Nature Ultra Multilayer					45%							●			1000	ZHC A ●	MT	98		●	
Z-Smile White							49%		●	●		●	●		600	ZHC W	HT	98		●	
Z-Smile	●	●	●	●			49%			●		●			600	ZHC A ●	HT	98		●	
Z-Smile Multilayer	●	●	●				49%			●		●			600	ZHC A ●	HT	98		●	

\* Complete your reference by inserting colour (•) and thickness (•). E.g.: PD-ZHCA1LT9814

## Pre-milled and personalized Pillars

# PERSONALIZED MANUFACTURING

A complete manufacturing protocol for personalized prosthetics pillars, improving anatomy, morphology and the biological structure of the patient.

As part of the digital flow, Reiner Dental supplies pre-milled for the manufacturing of **personalized abutments compatible with most of the existing implant manufacturers**. This is an excellent platform for aesthetic improvement.

In the other hand, we supply as well a **dynamic service for manufacturing personalized pillars**, in which the laboratory keeps the control from the original concept up to the final design. Where Reiner eliminates the need to make an investment on machinery, software licensing, etc. You only have to concentrate on the aesthetic and your customer experience.





## The advantages of personalized manufacturing against the brochure are:

### 1. Customer adaptation.

From morphology up the gingival height or pillar dimensions, without the brochure constrictions.

### 2. Custom angulation, depending the case.

### 3. Strength increases in the pillar.

### 4. Gingival height, really personalized to each patient and case.

The service of personalized pillars for screw retained restorations of Reiner can be adjust to any customer, resulting in a unique customer experience in laboratory as well as in clinic.

The pillars are manufactured using the latest manufacturing technologies and machinery and this together with the best prosthetic protocols, allows us to fulfil the highest quality standards.

**All our abutments are manufacturing in Ti Grade5: Ti6Al4V(Eli) according to ASTM F-136.**

### Precision:

Manufactured in Ti Grade5 with pre-milled connection for a perfect fitting with the implant, without micromovements.

### Flexibility:

The customers equipment will have less time of load as the critical part is already milled.

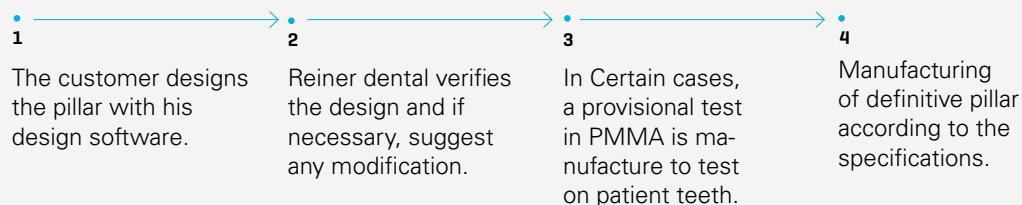
### Time:

Manufacturing time is reduced and therefore the delivery time to the customer

### Holder:

Design for 6 positions in machine.

## Reiner Dental process for personalized pillar manufacturing:



# CAD/CAM

Digital **solutions**

## Reiner **DENTAL**

---

**Reiner Medical S.L.**

Polígono Industrial Itziar, Parcela H-7

Tel: + (34) 943 606 286

[info@reinerdental.com](mailto:info@reinerdental.com)

[www.reinerdental.com](http://www.reinerdental.com)